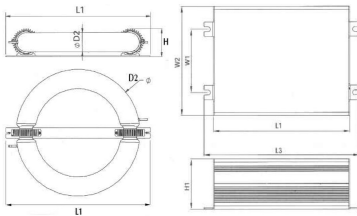


LVD-TX LVD Saturn Induction Kit (Lamp and Ballast)

FEATURES & SPECIFICATION SHEET



WATTS	L1	L3	W1	W2	H1
40W	4.37"	4.37"	4.76"	3.11"	1.22"
50W	4.37"	4.37"	4.76"	3.11"	1.22"
80W	7.04"	7.43"	1.61"	3.62"	1.96"
120W	7.04"	7.43"	1.61"	3.62"	1.96"
150W	7.04"	7.43"	1.61"	3.62"	1.96"
200W	7.04"	7.43"	1.61"	3.62"	1.96"
250W	7.04"	7.43"	1.61"	3.62"	1.96"
300W	7.04"	7.43"	1.61"	3.62"	1.96"

Ordering Information

LVD-TX120W - 5K

Model Color

MODEL	*COLOR TEMP	WATTS	LUMENS	LM/W	VOLTS U = 120-277	CURRENT	PWR FACTOR	DIMENSIONS L1 / H / D2
LVD-TX40W	5000k	40	3200	70-75	U	0.38 - 0.17	0.98	7.08" x 2.7" x 1.65"
LVD-TX50W	5000k	50	3700	70-75	U	0.52 - 0.23	0.98	7.08" x 2.7" x 1.65"
LVD-TX80W	5000k	80	6500	70-75	U	0.73 - 0.35	0.98	9.61" x 3.2" x 2.1"
LVD-TX120W	5000k	120	9600	75-80	U	1.09 - 0.48	0.98	13.1" x 3.2" x 2.1"
LVD-TX150W	5000k	150	12000	75-80	U	1.36 - 0.59	0.98	13.1" x 3.2" x 2.1"
LVD-TX200W	5000k	200	16500	80-85	U	1.77 - 0.77	0.98	13.8" x 3.5" x 2.3"
LVD-TX250W	5000k	250	21750	85-90	U	2.21 - 0.96	0.98	15.9" x 3.5" x 2.25"
LVD-TX300W	5000k	300	26100	85-90	U	2.65 - 1.15	0.98	16.5" x 3.5" x 2.24"

(*Available Color Temp Range 3000k – 6500k on request.)

Application

The LVD-TX round-loop induction lamps are low frequency electrodeless discharge (LFED) units. They are an ideal choice for replacement of common HID, Incandescent, or fluorescent lamps with 50-70% reduction in energy usage.

Features

- Lamp envelope is constructed of a high-temp silicon glass and solid amalgam channel in a sealed unit.
- Dual external inductors at fixed points surrounding the envelope.
- UL\c-UL listed to US and Canadian safety standards for ambient operation from -40°F to 122°F (-40°C to 50°C)
- Electronic ballast compatible with most brands

Performance

A long lifecycle rating of 100,000 hours or about 23 years operating hours 12 hours per day, 7 days per week. Electronic ballast features THD of less than 10%, constant output wattage, and fail-safe protection.

Warranty

Guaranteed for 5 years against manufacturing defects.