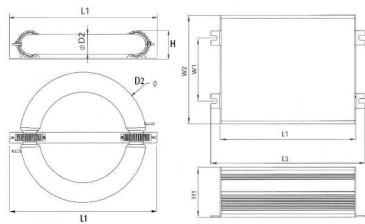


# ILRL Saturn Induction Kit (Lamp and Ballast)

## FEATURES & SPECIFICATION SHEET



WATTS	L1	L3	W1	W2	H1
40W	4.37"	4.37"	4.76"	3.11"	1.22"
60W	4.37"	4.37"	4.76"	3.11"	1.22"
80W	7.04"	7.43"	1.61"	3.62"	1.96"
100W	7.04"	7.43"	1.61"	3.62"	1.96"
120W	7.04"	7.43"	1.61"	3.62"	1.96"
150W	7.04"	7.43"	1.61"	3.62"	1.96"
200W	7.04"	7.43"	1.61"	3.62"	1.96"
250W	7.04"	7.43"	1.61"	3.62"	1.96"
300W	7.04"	7.43"	1.61"	3.62"	1.96"
400W	7.04"	7.43"	1.61"	3.62"	1.96"

### Ordering Information

ILRL120 - 5K

Model Color

### Application

The ILRL round-loop induction lamps are low frequency electrodeless discharge (LFED) units. They are an ideal choice for replacement of common HID, Incandescent, or fluorescent lamps with 50-70% reduction in energy usage.

### Features

- Lamp envelope is constructed of a high-temp silicon glass and solid amalgam channel in a sealed unit.
- Dual external inductors at fixed points surrounding the envelope.
- UL/C-UL listed to US and Canadian safety standards for ambient operation from -40°F to 122°F (-40°C to 50°C)
- Electronic ballast compatible with most brands

### Performance

A long lifecycle rating of 100,000 hours or about 23 years operating hours 12 hours per day, 7 days per week. Electronic ballast features THD of less than 10%, constant output wattage, and fail-safe protection.

### Warranty

Guaranteed for 5 years against manufacturing defects.

MODEL	COLOR TEMP*	WATTS	LUMENS	LM/W	VOLTS U = 120-277	CURRENT	PWR FACTOR	DIMENSIONS L1 / H/ D2
ILRL40	5000K	40	3200	70-75	U	0.38 - 0.17	0.98	7.08" x 2.7" x 1.65"
ILRL60	5000K	60	4800	70-75	U	0.52 - 0.23	0.98	7.08" x 2.7" x 1.65"
ILRL80	5000K	80	6500	70-75	U	0.73 - 0.35	0.98	9.61" x 3.2" x 2.1"
ILRL100	5000K	100	8100	75-80	U	0.93 - 0.40	0.98	9.61" x 3.2" x 2.1"
ILRL120	5000K	120	9600	75-80	U	1.09 - 0.48	0.98	13.1" x 3.2" x 2.1"
ILRL150	5000K	150	12000	75-80	U	1.36 - 0.59	0.98	13.1" x 3.2" x 2.1"
ILRL200	5000K	200	16500	80-85	U	1.77 - 0.77	0.98	13.8" x 3.5" x 2.3"
ILRL250	5000K	250	21750	85-90	U	2.21 - 0.96	0.98	15.9" x 3.5" x 2.25"
ILRL300	5000K	300	26100	85-90	U	2.65 - 1.15	0.98	16.5" x 3.5" x 2.24"
ILRL400	5000K	400	34800	85-90	U	3.45 - 1.54	0.98	19" x 3.5" x 2.24"

(\*Available Color Temp Range 3000k – 6500k on request.)

[InductionLightingFixtures.com](http://InductionLightingFixtures.com)

Toll Free: 855-453-2852 | Email: [info@inductionlightingfixtures.com](mailto:info@inductionlightingfixtures.com)