

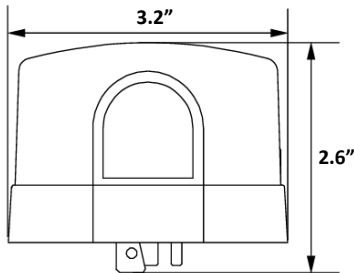


TWIST-LOCK Photocell – ISENP1 Series

FEATURES & SPECIFICATION SHEET



Dimensions



Installation

- 1: Push down
- 2: Rotate clockwise to lock



Application

The ISENP1 Series twist-lock photocell (also called a twist-lock photo control or dusk-to-dawn sensor) is a lighting control device that automatically turns lights on at dusk and off at dawn. It uses a photocell sensor to detect ambient light levels. Available in 120-277v, or 480v versions.

The "twist-lock" part refers to the standardized 3-prong base that plugs into a matching socket—usually found on street lights, parking lot lights, or commercial outdoor fixtures. Instead of wiring it in permanently, you just twist it on or off, like screwing in a light bulb. Super convenient for maintenance and upgrades.

Features

- * **Automatic control** – saves energy by only running lights when needed.
- * **Mount** – compliant with ANSI C136.10 (3-pin), ANSI C136.41, UL773, CSA C22.2 NO. 182.2-M1987. Brass Plug-In base.
- * **Durability** – often rated for outdoor use with weatherproof housing. Working temperature: -40°F to 158°F (-40°C to 70°C), Sealable.
- * **Housing** - High impact polypropylene with UV stabilized polycarbonate window. IP66 rating.
- * **Protection** - Onboard MOV array.

Warranty

Guaranteed for 5 years against manufacturing defects.

Electrical Specs:

Volts	Volt Range	Tungsten Load	Ballast Load	Electronic (LED) Load	Turn On	Surge
120-277v	105v - 305v	1000w	1200VA	8amps(120v), 5amps(208-277v)	2.3fc	180 Joules
480v	480v	1000w	1200VA	2.2amps	1.5fc	180 Joules